

Artikel Nr. : 025
 Artikel Name: Zimtblätteröl
 Chargen Nr. : 2012113432



Versandhandel für Aromaöle
 Groß- und Einzelhandel
 Import - Export

Version 1.0

Area Percent Report

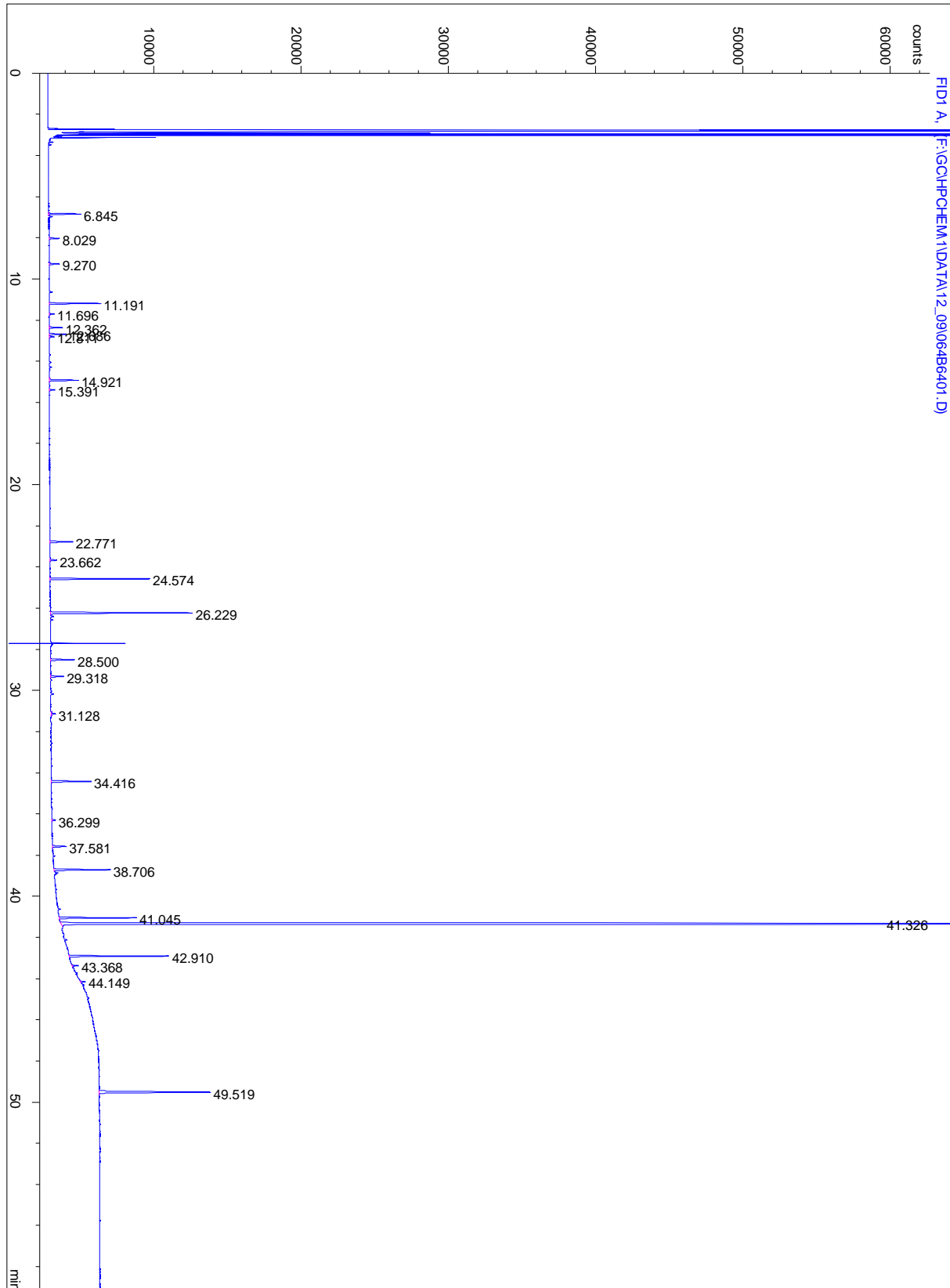
Peak #	RT [min]	Type	Width [min]	Area [counts*s]	Height [counts]	Area %	Compound			
1	6.845	BB	0.0391	5484.00342	2.19782e3	0.711	~Pinen			
2	8.029	BB	0.0413	1931.00513	718.84155	0.250				
3	9.270	BB	0.0421	1878.73901	704.72913	0.244				
4	11.191	BP	0.0410	9088.62988	3.53553e3	1.178				
5	11.696	BP	0.0385	922.33453	353.28918	0.120				
6	12.362	BB	0.0424	2381.30591	915.35358	0.309	Limonen			
7	12.686	BB	0.0406	3053.56934	1.16267e3	0.396				
8	12.811	BP	0.0412	946.48529	342.69818	0.123				
9	14.921	BP	0.0422	5278.64307	1.97699e3	0.684	p-Cymen			
10	15.391	BP	0.0382	997.24139	385.00876	0.129				
11	22.771	BP	0.0468	4548.00293	1.57171e3	0.590				
12	23.662	BB	0.0437	1326.24219	472.56259	0.172				
13	24.574	BP	0.0414	1.77104e4	6.80040e3	2.296	Linalool			
14	26.229	BP	0.0458	2.88322e4	9.65894e3	3.738	~Caryophyllen			
15	28.500	BB	0.0461	4920.13623	1.63663e3	0.638				
16	29.318	PB	0.0461	2683.09106	918.37506	0.348	~Terpineol			
17	31.128	BP	0.0410	756.51648	294.53864	0.098				
18	34.416	BP	0.0491	8399.68945	2.71120e3	1.089	Safrol			
19	36.299	BB	0.0440	777.71100	267.16876	0.101				
20	37.581	BP	0.0479	2851.84497	952.93939	0.370				
21	38.706	BB	0.0457	1.14061e4	3.83043e3	1.479	trans-Zimtaldehyd			
22	41.045	BB	0.0385	1.28020e4	5.24927e3	1.660	Cinnamylacetat			
23	41.326	PB	0.0383	5.96223e5	2.37152e5	77.290	Eugenol			
24	42.910	BP	0.0380	1.62546e4	6.76679e3	2.107	Zimtalkohol			
25	43.368	PB	0.0377	1062.85498	418.06830	0.138				
26	44.149	BP	0.0403	842.95886	314.44754	0.109				
27	49.519	BB	0.0593	2.80486e4	7.56431e3	3.636	Benzylbenzoat			
-----							ca. 38.0	<0.1	Methyleugenol	
-----							Totals:	7.71408e5	2.98873e5	100.000

*** End of Report ***

Artikel Nr. : 025
Artikel Name: Zimtblätteröl
Chargen Nr. : 2012113432



Versandhandel für Aromöle
Groß- und Einzelhandel
Import - Export



Datum: 29. Nov. 12

Anlage 2

C:\Windows\TEMP\wdsrv\ab01db54-e125-403f-9791-2c27c56dc676\0er253dr.wb4\nzga0wer.oar\aofkdi41.ryp.docx